

# Renton Park 405, Building A

1101 SW 16th Street, Renton, Washington

## For Lease



124,968 SF, with  
4,202 SF Office

**DIVISIBLE:**  
45,668 SF  
53,300 SF  
66,300 SF  
79,300 SF

### FEATURES

- Strategic location provides immediate access to I-405, I-5, and SR-167. 15 minutes to Seattle and Bellevue, and 5 minutes to SeaTac International Airport
- 30' clear height
- Freestanding building
- 19 dock-high and 8 grade-level doors (6 of which are 24' wide x 14' high)
- Standard bay size: 52' x 41'8"
- \$0.34 PSF shell  
\$0.65 PSF office  
\$0.103 PSF est. NNN
- Available May 1, 2005
- Please visit [www.tiaakentvalley.com](http://www.tiaakentvalley.com) for more information

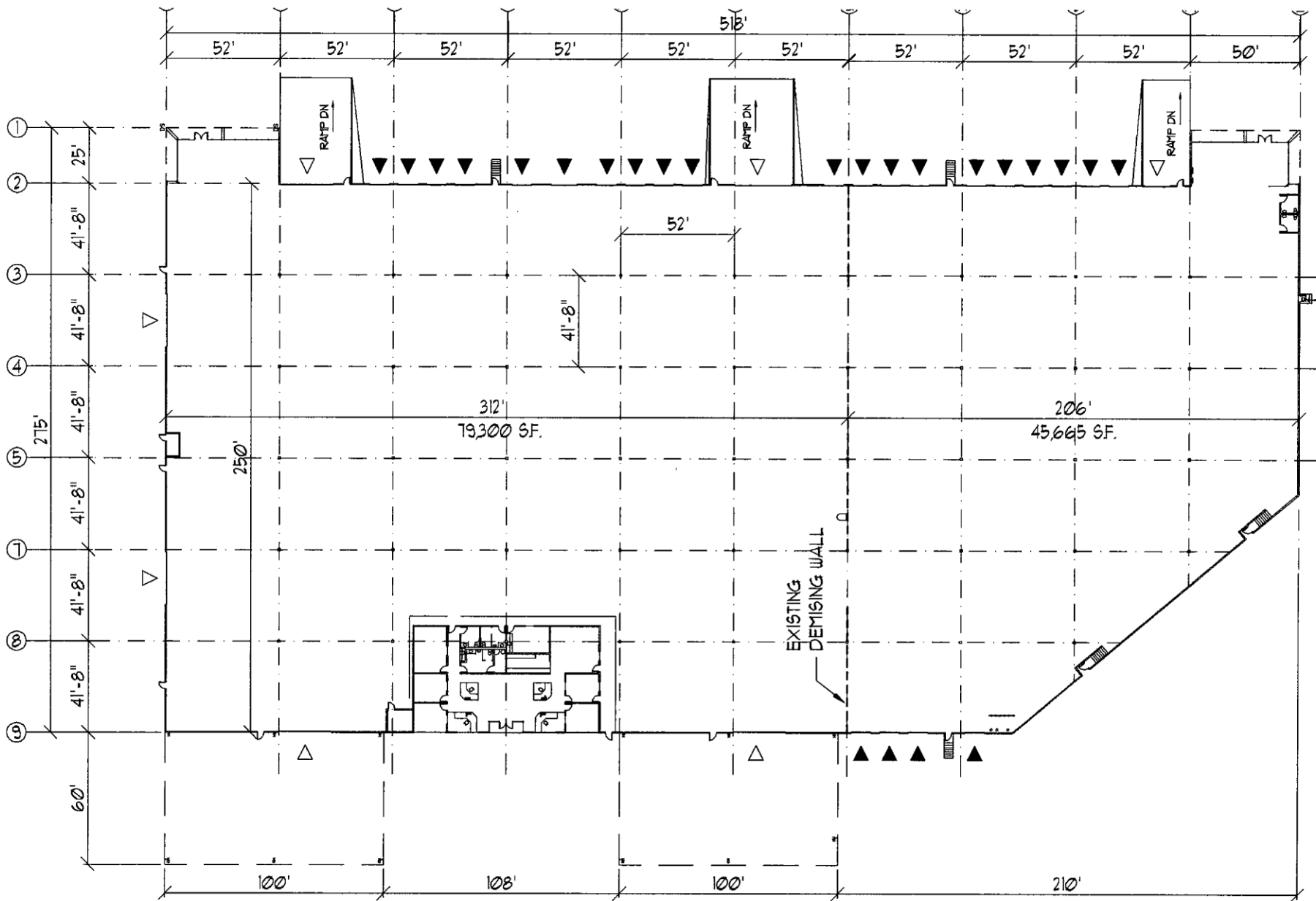


For additional information, please contact:

[www.gvakm.com](http://www.gvakm.com)

Terry McAleer, CCIM	206.248.7312	tmcaleer@gvakm.com
Doug Klein, SIOR, CCIM	206.248.7348	dklein@gvakm.com
Patricia Loveall, SIOR	206.248.7340	ploveall@gvakm.com

**GVA Kidder Mathews**  
Worldwide Real Estate Solutions



# RENTON PARK 405

S.W. 16TH & 84TH AVE. S  
RENTON, WA

BUILDING "A" AREA: 124,968 S.F.  
OFFICE: 4,202 S.F.

- △ DRIVE-IN DOORS
- ▲ DOCK HIGH DOORS

