

# Auburn Park 167, Building B

3703 "I" Street N.W., Auburn, WA

FOR  
LEASE



## Features

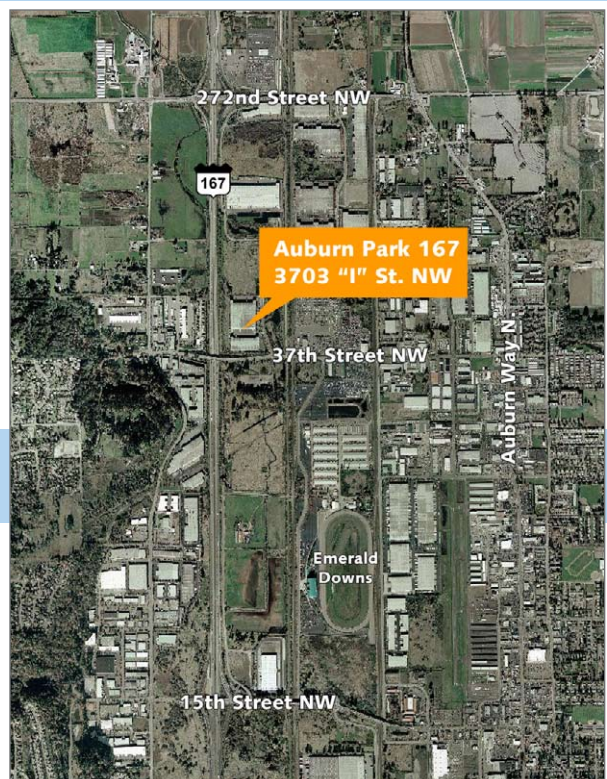
- Approx. 59,395 SF available, with 2,352 SF office
- Great exposure to SR-167
- 14 dock-high doors and 1 drive-in door
- ESFR sprinkler
- Excellent parking
- High image
- Available October 1, 2009
- \$0.38 per square foot, NNN, shell  
\$0.75 per square foot, NNN, office

## Contact

**Doug Klein, SIOR, CCIM** 206.248.7348  
dklein@gvakm.com

**Patricia J. Loveall, SIOR** 206.248.7340  
ploveall@gvakm.com

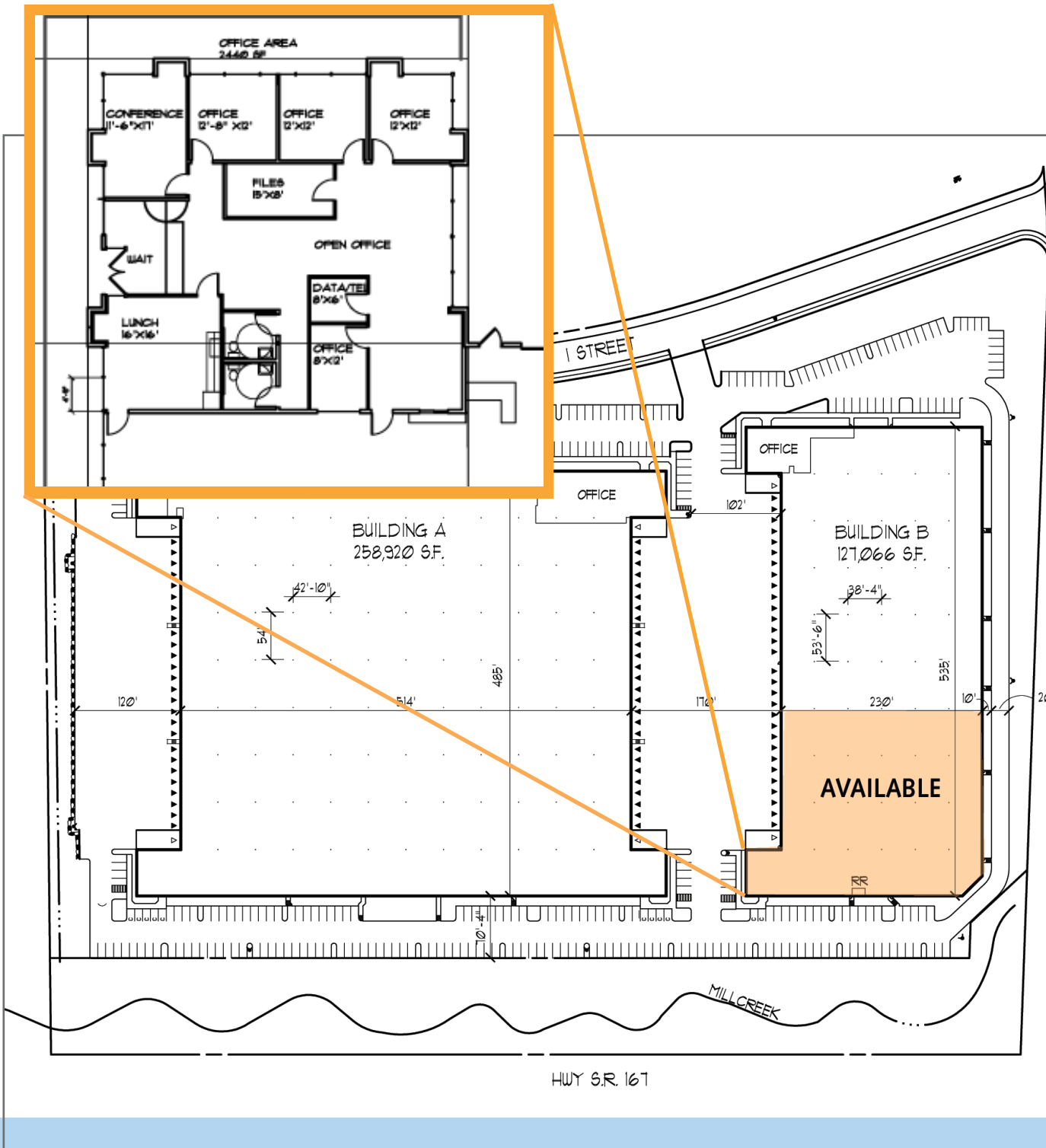
www.tiaakentvalley.com  
www.gvakm.com



# Auburn Park 167, Building B

3703 "I" Street N.W., Auburn, WA

FOR LEASE



## Contact

**Doug Klein, SIOR, CCIM**

206.248.7348

[dklein@gvakm.com](mailto:dklein@gvakm.com)

**Patricia J. Loveall, SIOR**

206.248.7340

[ploveall@gvakm.com](mailto:ploveall@gvakm.com)

[www.gvakm.com](http://www.gvakm.com)